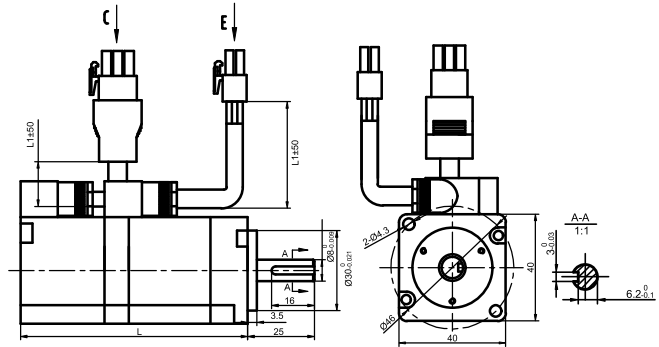


Servo motor installation dimensions

Base-40 motor outline dimensions (unit: mm)

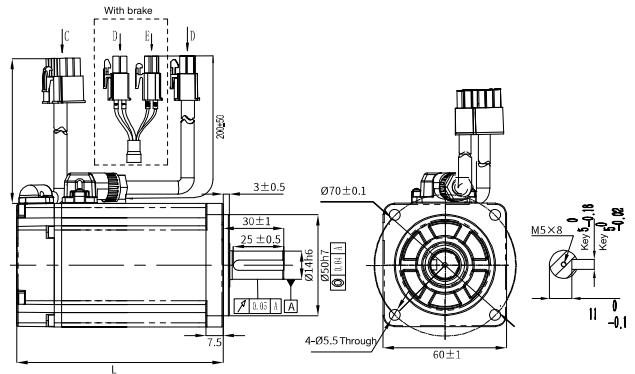
Motor model 2500-PPR/Multiturn absolute/ Resolver	L(mm)	
	Without brake	With EM brake
IMS20A-04L10B30C-2-***	84.8	124

Note: Motor structure dimensions may vary with design modification. If you are sensitive to motor dimensions, contact sales staff before ordering.



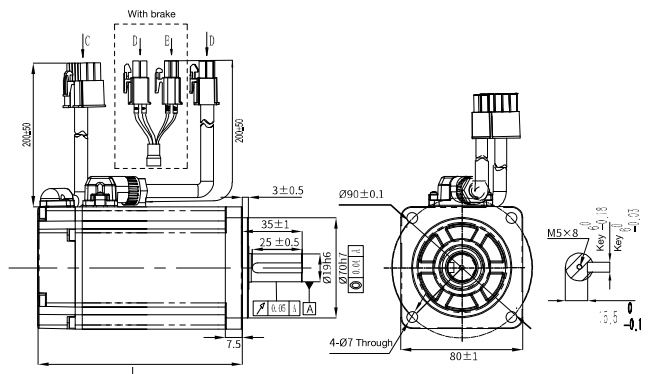
Base-60 motor outline dimensions (unit: mm)

Motor model 2500-PPR/Multiturn absolute/ Resolver	L(mm)	
	Without brake	With EM brake
IMS20A-06M20B30C-2-***	87	110.5
IMS20A-06M40B30C-2-***	107	130.5



Base-80 motor outline dimensions (unit: mm)

Motor model 2500-PPR/Multiturn absolute/ Resolver	L(mm)	
	Without brake	With EM brake
IMS20A-08M75B30C-2-***	119	143.5
IMS20A-08M10C25C-2-***	153	154

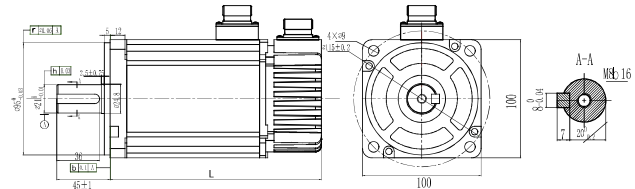


Servo motor installation dimensions

Base-100 motor outline dimensions (unit: mm)

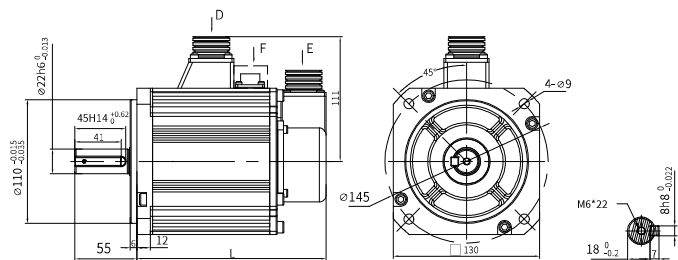
Note: Motor structure dimensions may vary with design modification. If you are sensitive to motor dimensions, contact sales staff before ordering.

Motor model Magnetic,optical absolute/Resolver	L(mm)	
	Without brake	With EM brake
IMS20A-10M10C30C-2(4)-**	154	194
IMS20A-10M15C30C-2(4)-***	178	218
IMS20A-10M20C30C-4-***	200	240



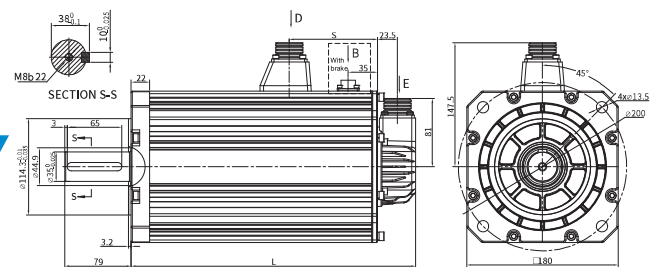
Base-130 motor outline dimensions (unit: mm)

Motor model Magnetic,optical absolute/Resolver	L(mm)	
	Without brake	With EM brake
IMS20A-13M10C20C-2(4)-***-A1	138.5	168.2
IMS20A-13M15C20C-2(4)-***-A1	151.5	181.2
IMS20A-13M20C20C-2(4)-***-A1	168.5	198.2
IMS20A-13M30C20C-2(4)-***-A1	210.5	240.2
IMS20A-13H85B15C-2(4)-***-A	143	173
IMS20A-13H13C15C-2(4)-***-A	160	190
IMS20A-13H18C15C-2(4)-***-A	185	215



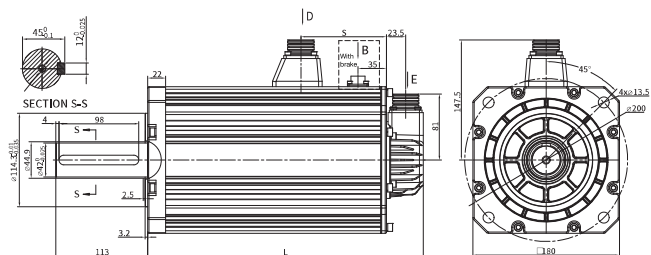
Base-180 motor outline dimensions (unit: mm)

Motor model Magnetic,optical absolute/Resolver	L(mm)	
	Without brake	With EM brake
180 flange motor A type axes		
IMS20A-18M30C15C-4-***	233	306
IMS20A-18M44C15C-4-***	263	336
180 flange motor B type axes		
IMS20A-18M55C15C-4-***	293	366
IMS20A-18M75C15C-4-***	348	421



180 flange motor A type axes

IMS20A-18M30C15C-4-***
IMS20A-18M44C15C-4-***

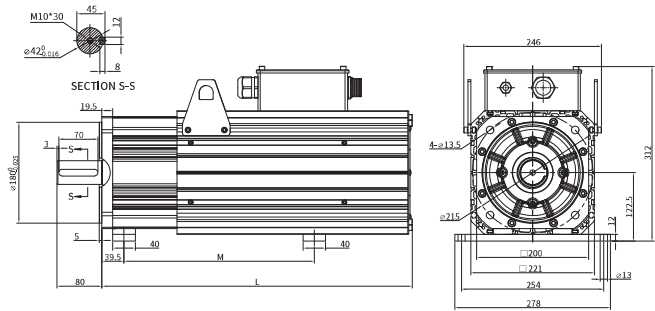


180 flange motor B type axes

IMS20A-18M55C15C-4-***
IMS20A-18M75C15C-4-***

Base-200 motor outline dimensions (unit: mm)

Motor model Magnetic,optical absolute/Resolver	L(mm)	
	Without brake	With EM brake
IMS20A-20M11D18C-4-***	379	515
IMS20A-20M16D20C-4-***	414	550
IMS20A-20M18D18C-4-***	484	638
IMS20A-20M25D18C-4-***	554	692



The length of M could be adjusted within the range of L.

Base-263 motor outline dimensions (unit: mm)

Motor model 2500-PPR/Multiturn absolute/ Resolver	L(mm)	
	Without brake	
IMS20A-26M41D20C-4-***	537	
IMS20A-26M48D20C-4-***	537	
IMS20A-26M56D20C-4-***	617	
IMS20A-26M64D20C-4-***	657	

